



12,000 BTUH  
Indoor/Outdoor, NEMA Types 12, 4 & 4X Available

Engineered & manufactured to endure the most difficult of environments and applications. Thermal Edge air conditioners will exceed environmental requirements in applications like *Steel, Food Processing, Petro-Chemical, Cement, Paper & Pulp and Plastics.*



**Digital Temperature Controller**

- Programmable set point and temperature operating controls
- Visible error and/or alarm messaging
- System status indication
- Password protection

**Active Condensate Management System**

- Complete elimination of condensate
- Eradicates condensate without corrosive contact with coils

**Unit Efficiency**

- Pressure operated blower control reduces power inrush and saves energy
- Highly efficient rotary compressor
- Fully insulated & sealed cabinet
- Temperature Control Valve to provide a broad temperature range while maintaining cooling capacity

**Industrial Construction**

- Free standing rigid chassis eases installation and maintenance

**Compressor Protection System**

- High & Low refrigerant cutouts with fault indication
- Compressor anti short cycle protection
- Compressor run capacitors reduce power inrush, save energy and increase compressor life

**Options:**

- External Alarm Capabilities
- Corrosive Environment Package
- High and Low Ambient Packages
- Dry Contact Remote Monitoring Options
- Integrated Enclosure Heat System
- Cooling Capacities of 1000 to 20,000 BTUH
- Hazardous Location Units available

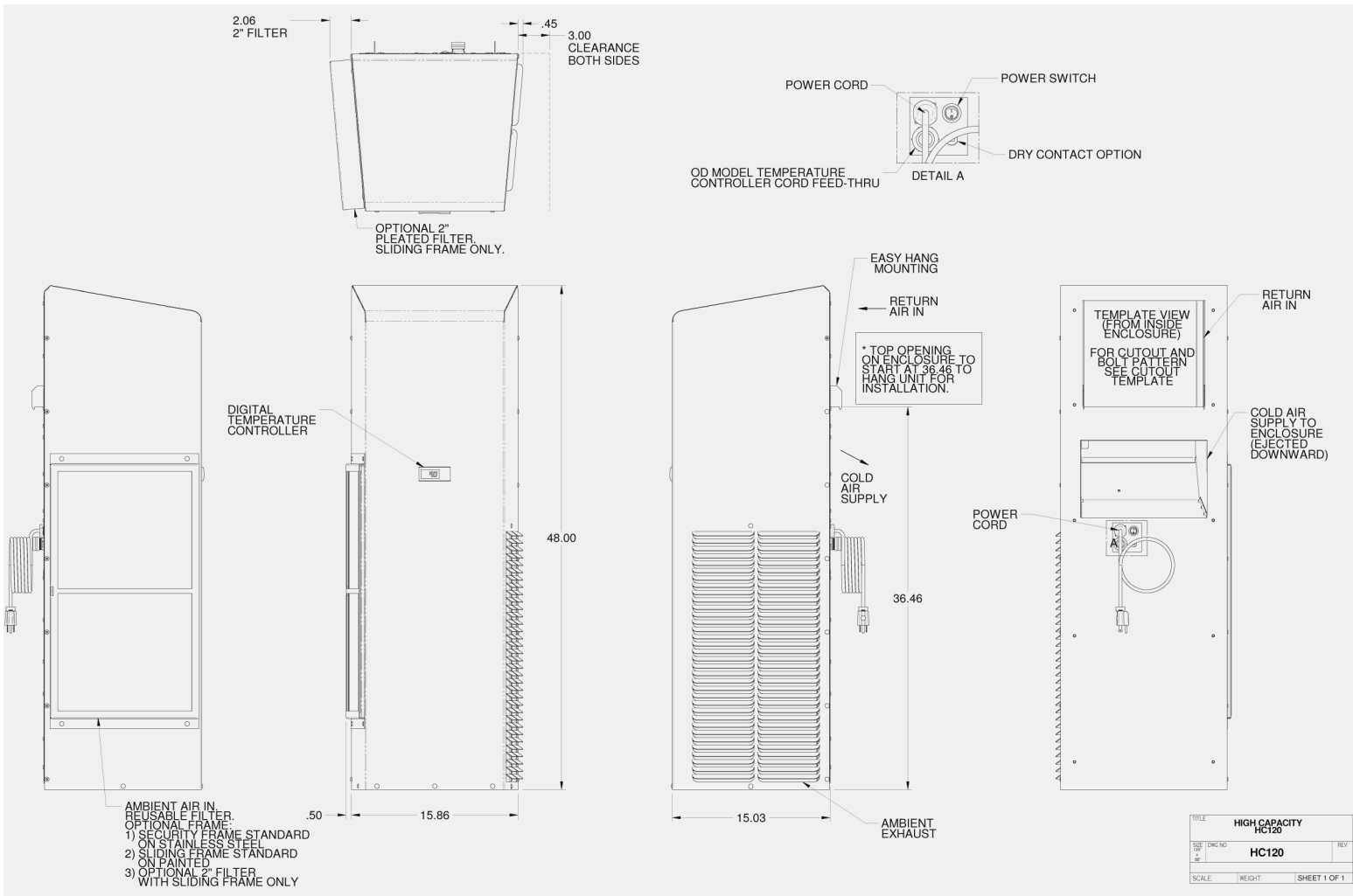
UL File # SA32252



| Model    | BTU/ Hour | Voltage/ Hz. | Running Amps | Max. Ambient Temperature | H x W x D               | UL Listed | Weight (lbs.) Unit / Ship |
|----------|-----------|--------------|--------------|--------------------------|-------------------------|-----------|---------------------------|
| HC120126 | 12,000    | 120/1/60     | 16.3         | 125°F                    | 48" x 15.86" x 15.03"   | No        | 162 / 183                 |
| HC120236 | 12,000    | 230/1/60     | 8.12         | 125°F                    | 48" x 15.86" x 15.03"   | Yes       | 165 / 186                 |
| HC120486 | 12,000    | 480/1/60     | 4.8          | 125°F                    | 56.6" x 15.86" x 15.03" | Yes       | 222 / 244                 |

All information subject to change without notice

**Get the Edge...Get Thermal Edge**



All information subject to change without notice

**Get the Edge...Get Thermal Edge**