



8000 BTUH

Indoor/Outdoor, NEMA Types 12, 4 & 4X Available

Engineered & manufactured to endure the most difficult of environments and applications. Thermal Edge air conditioners will exceed environmental requirements in applications like *Steel, Food Processing, Petro-Chemical, Cement, Paper & Pulp and Plastics.*

11.8" wide



No water drips from
Thermal Edge
enclosure air conditioners

Digital Temperature Controller

- Programmable set point and temperature controls
- Visible Error and/or alarm messaging
- System status indication with keypad lockout function
- Modbus RTU, RS485 communication

Active Condensate Evaporation System

- Constant elimination of condensate
- Increases unit efficiency by pre-cooling refrigerant

Key Design Features

- Sloped top to allow for water runoff
- Designed with rigid chassis and seam welded shroud
- Thoughtful interior design for easy maintenance
- Narrow body style fits on 12" enclosure

Unit Efficiency

- Pressure operated blower control reduces power inrush and saves energy
- Highly efficient rotary compressor
- Fully insulated & sealed cabinet
- Thermal Expansion Valve to maintain cooling capacity over a broad ambient temperature range

Compressor Protection System

- High & Low refrigerant cutouts with fault indication
- Compressor anti short cycle protection
- Compressor run capacitors reduce power inrush, save energy and increase compressor life

Options:

- External Alarm Capabilities
- Open Door Kill Switch
- Corrosive Environment Package
- Low Ambient Packages
- Dry Contact Remote Monitoring Options
- Integrated Enclosure Heat System
- UL Listed Hazardous Location

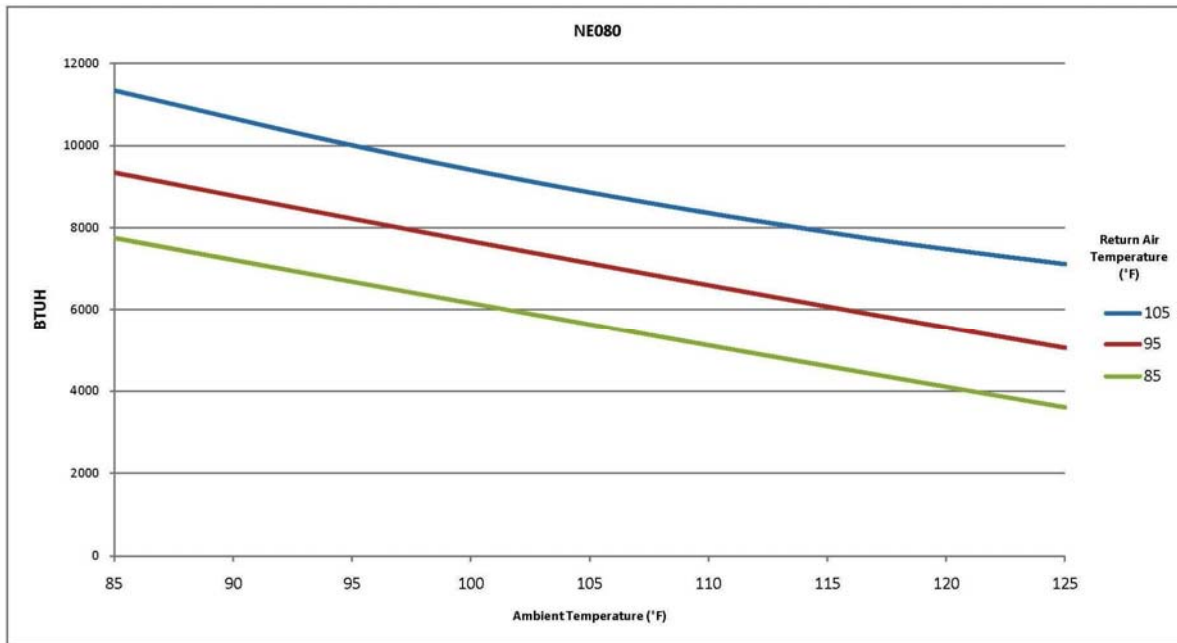


MADE IN THE USA

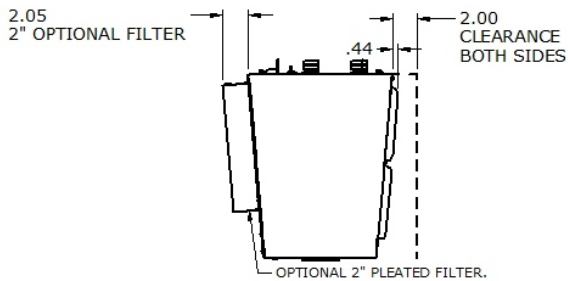


Model	BTU/ Hour	Material	Voltage Phase Hz.	Running Amps	Max. Ambient Temperature	H x W x D	Weight (lbs.) Unit / Ship
NE08-0126-12	8000	Powder coated steel	120V/1/60	7.83	125°F	36" x 11.8" x 15.02"	121 / 139
NE080-126-04	8000	Powder coated steel	120V/1/60	7.83	125°F	36" x 11.8" x 15.02"	121 / 139
NE080-126-4X	8000	Stainless steel	120V/1/60	7.83	125°F	36" x 11.8" x 15.02"	121 / 139
NE080-236-12	8000	Powder coated steel	230V/1/60	4.80	125°F	36" x 11.8" x 15.02"	122 / 140
NE080-236-04	8000	Powder coated steel	230V/1/60	4.80	125°F	36" x 11.8" x 15.02"	122 / 140
NE080-236-4X	8000	Stainless steel	230V/1/60	4.80	125°F	36" x 11.8" x 15.02"	122 / 140
NE080-486-12	8000	Powder coated steel	480V/1/60	1.80	125°F	44.63" x 11.8" x 15.02"	170 / 189
NE080-486-04	8000	Powder coated steel	480V/1/60	1.80	125°F	44.63" x 11.8" x 15.02"	170 / 189
NE080-486-4X	8000	Stainless steel	480V/1/60	1.80	125°F	44.63" x 11.8" x 15.02"	170 / 189

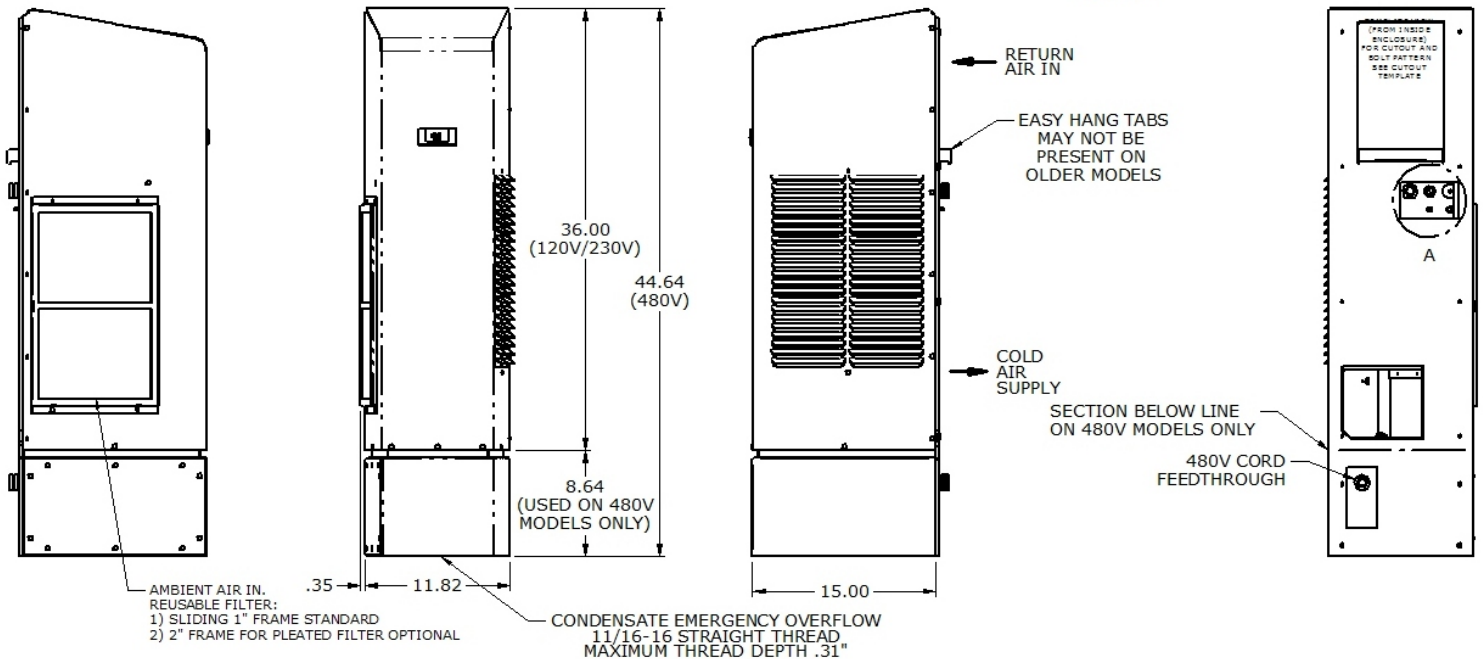
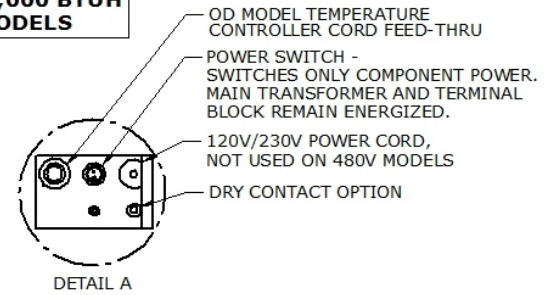
Get the Edge...Get Thermal Edge



Testing done under controlled conditions. Actual performance may vary.



**NARROW EDGE NE080 - 8,000 BTUH
120V, 230V, AND 480V MODELS**



UL File # SA32252



Information subject to change without notice

2011/11